

eSolarPowerCELL™ RETAIL PANEL DATA

● PHOTOVOLTAIC POWER SYSTEMS ●

Indianapolis.IN

317.926.7000/ Toll-Free 866.987.6648

ePV.S- 360



MAXIMUM POWER STC Pmp WATTS

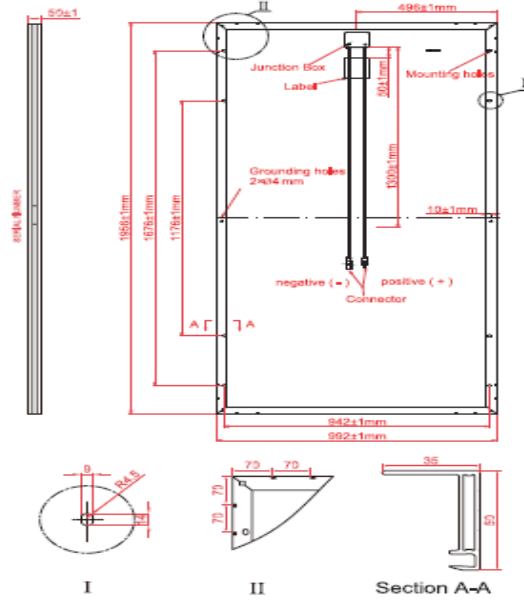
	290	340	360
Open Circuit Voltage - Voc (V)	38.80	45.90	47.40
Short Circuit Current - Isc (A)	9.02	9.12	9.70
Maximum Power Voltage - Vmp (V)	31.60	37.50	38.50
Maximum Power Current - Imp (A)	8.71	8.80	9.36
Module Efficiency STC - η_m (%)	16.90	17.01	18.55
POWER Tolerance	(0,+4.99)		
Maximum System Voltage	1000 (TUV), 1000 (UL)		
Maximum Series Fuse Ratings	20		

eSolarPowerCELL™ RETAIL PANEL DATA

● PHOTOVOLTAIC POWER SYSTEMS ●

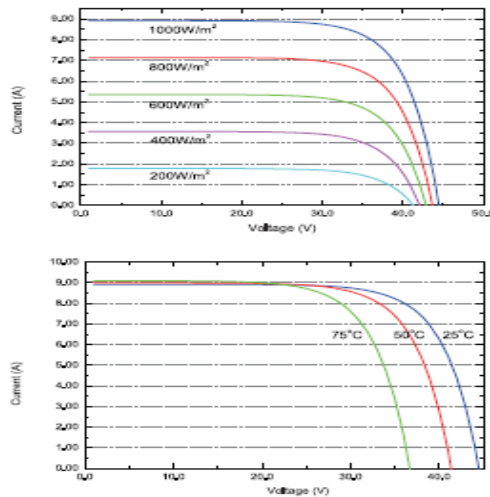
Indianapolis.IN

317.926.7000/ Toll-Free 866.987.6648



* All Dimensions in mm
 * The above drawing is a graphical representation of the product.
 For engineering quality drawings please contact SERAPHIM.

I-V & P-V Curve (SRP-6PA)



eSolarPowerCELL™ RETAIL PANEL DATA

● PHOTOVOLTAIC POWER SYSTEMS ●

Indianapolis.IN

317.926.7000/ Toll-Free 866.987.6648

TEMPERATURE TOLERANCE

Pmax Temp Coefficient	-0.40 %/ °C
Voc Temp Coefficient	-0.32 %/ °C
Isc Temp Coefficient	+0.05 %/ °C
Operating Temperature	-0.40 ~ +85 °C
Normal Cell Temperature	45 ± 2 °C

MECHANICAL SPECIFICATIONS

External Dimensions	1956 x 992 x 40 mm	1956 x 992 x 50 mm
Weight	23.0 kg	24.0 kg
Solar Cells	Monocrystalline 156x156mm / 72 units	
Front Glass	3.2 mm tempered low Iron	
Frame	Anodized Aluminum Alloy	
Junction Box	IP67	
Outlet Cables	4.0 mm ² Cable Length 1300 mm	
Connectors	MC4 Compatible	
Mechanical Load	5400 PA	

eSolarPowerCELL™ RETAIL PANEL DATA

● PHOTOVOLTAIC POWER SYSTEMS ●

Indianapolis.IN

317.926.7000/ Toll-Free 866.987.6648

eSolarPowerCELL RETAIL LIST PRICING

WATTAGE	Price/WATT	UNIT PRICE
290	\$0.83	\$241.79
340	\$0.82	\$278.16
360	\$0.89	\$320.04

CONSULT YOUR REGIONAL PARTNER for DISCOUNT PRICING



Minimum Panel Orders: 1 Pallet @ 26 Units/ Pallet

Please Place Orders With Your Regional Partner or:

marketoperations@esolartech.com

317.926.7000 USA

Allow 4 – 6 Weeks for Delivery

Volume Discounts Available // Prices Subject to Change